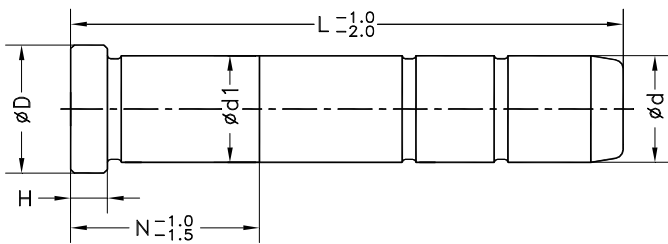
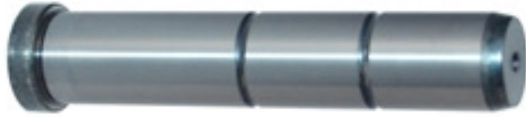


**直身導柱 Straight Guide Pin(公制)**

材質 Material: SUJ2

硬度 Hardness: 60HRC ± 2



單位Unit:MM

**尺寸 Dimension**

型號 Nom. size	d		d1		H	D
	尺寸 Size	公差 Tolerance	尺寸 Size	公差 Tolerance		
12	12	-0.016	12	+0.018	5	17
16	16	-0.027	16	+0.007	6	21
20	20	-0.020 -0.033	20	+0.021 +0.008		25
25	25		25		30	
30	30		30		35	
35	35	-0.025 -0.041	35	+0.025 +0.009	8	40
40	40		40			45
50	50		50		56	
60	60	-0.030 -0.076	60	+0.030 +0.011	12	66
70	70		70			76
80	80		80		86	
90	90	-0.036 -0.090	90	+0.035 +0.013	15	96
100	100		100			106

**標準尺寸 Standard Sizes**

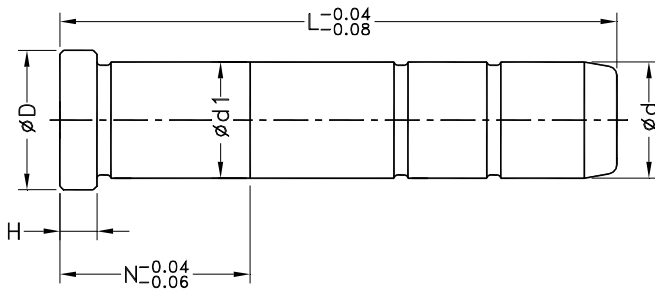
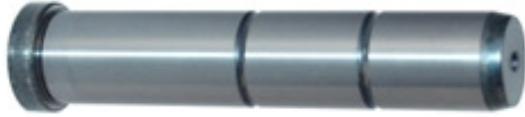
L	d												
	12	16	20	25	30	35	40	50	60	70	80		
45	15	15	15										
50	15	*15	*15										
55	20	*20	*20	20									
60	20	*20	*20	*20									
65	20	*20	*20	*20	20								
70	20	*20	*20	*20	*20								
75	20	*20	*20	*20	20	25							
80	25	*25	*25	*25	*25	25							
85	25	*25	*25	*25	25	25							
90	25	*25	*25	*25	*25	25							
95	25	*25	*25	*25	*25	25	30						
100	25	*25	*25	*25	*25	25	30						
105	25	*25	*25	*25	*25	30	35						
110	25	*25	*25	*25	*25	*30	35						
115	25	*25	*25	*25	*25	30	35						
120	25	*25	*25	*25	*25	*30	*35						
125	25	*25	*25	*25	25	30	35						
130	25	*25	*25	*25	*25	*30	*35						
135	25	*25	*25	*25	*25	30	35						
140	25	*25	*25	*25	*25	*30	*35	40					
150	25	*25	*25	*25	*25	*30	*35	*40					
160	30	*30	*30	*30	*30	*35	*40	*45					
170			*30	*30	*30	*35	*40	*45					
180			*30	*30	*30	*35	*40	*45	45				
190			*30	*30	*30	*35	*40	*45	45				
200			*30	*30	*30	*35	*40	*45	45				
210			30	*35	*35	*40	*45	*50	50				
220			30	*35	*35	*40	*45	*50	50				
230				*35	*35	*40	*45	*50	50				
240				35	*35	*40	*45	*50	50				
250				35	*35	*40	*45	*50	50				
260				40	*40	*45	*50	55	55				
270				40	*40	*45	*50	55	55				
280				40	40	*45	*50	55	55				
290				40	40	45	*50	55	55				
300				40	40	45	50	55	55	60	60		
310					45	50	55	60	60	75	75		
320					45	50	55	60	60	75	75		
330					45	50	55	60	60	75	75		
340					45	50	55	60	60	75	75		
350					45	50	55	60	60	75	75		
360					50	55	60	65	65	80	80		
370					50	55	60	65	65	80	80		
380					50	55	60	65	65	80	80		
390					50	55	60	65	65	80	80		
400					50	55	60	65	65	80	80		
410										85	85		
420								65	70	70	85	85	
430											85	85	
440								65	70	70	85	85	
450											85	85	
460								70	75	75	90	90	
470											90	90	
480								70	75	75	90	90	
490											90	90	
500								70	75	75	90	90	
520											80	95	95
540											80	95	95
560											80	95	95
580											80	95	95
600											80	95	95
620												100	100
640												100	100
660												100	100
680												100	100
700												100	100

\*=庫存 Stock

**直身導柱 Straight Guide Pin(英制)**

材質 Material: **SUJ2**

硬度 Hardness: **60HRC ± 2**



單位Unit:INCH

標準尺寸 Standard Sizes

L \ d	Standard Sizes						
	5/8"	3/4"	7/8"	1"	1-1/4"	1-1/2"	2"
2"	5/8						
2-1/4"	3/4						
2-1/2"	3/4	3/4					
2-3/4"	3/4	3/4					
3"	3/4	3/4	3/4	3/4	3/4		
3-1/4"	1	1	1	1	1		
3-1/2"	1	1	1	1	1		
3-3/4"	1	1	1	1	1		
4"	1	1	1	1	1	1	
4-1/4"	1	1	1	1	1	1	
4-3/4"	1	1	1	1	1	1	
5-1/4"	1	1	1	1	1	1	1
5-3/4"	1	1	1	1	1	1	1
6-1/4"	1-1/4	1-1/4	1-1/4	1-1/4	1-1/4	1-1/4	1-1/4
6-3/4"	1-1/4	1-1/4	1-1/4	1-1/4	1-1/4	1-1/4	1-1/4
7-1/4"		1-1/4	1-1/4	1-1/4	1-1/4	1-1/4	1-1/4
7-3/4"		1-1/4	1-1/4	1-1/4	1-1/4	1-1/4	1-1/4
8-1/4"		1-1/4	1-1/4	1-1/4	1-1/4	1-1/4	1-1/4
8-3/4"		1-3/8	1-3/8	1-3/8	1-3/8	1-3/8	2
9-1/4"		1-3/8	1-3/8	1-3/8	1-3/8	1-3/8	2
9-3/4"		1-3/8	1-3/8	1-3/8	1-3/8	1-3/8	2
10-1/4"		1-3/8	1-3/8	1-3/8	1-3/8	1-3/8	2
10-3/4"				1-3/5	1-3/5	1-3/5	2-1/4
11-1/4"				1-3/5	1-3/5	1-3/5	2-1/4
11-3/4"				1-3/5	1-3/5	1-3/5	2-1/4
12-1/4"				1-3/5	1-3/5	1-3/5	2-1/4
12-3/4"				1-3/4	1-3/4	1-3/4	2-1/2
13-3/4"				1-3/4	1-3/4	1-3/4	2-1/2
14-3/4"				2	2	2	2-5/8
15-3/4"					2-1/4	2-1/4	2-5/8
16-3/4"					2-1/4	2-1/4	2-3/4
17-3/4"					2-1/4	2-1/4	2-3/4
18-3/4"						2-1/4	3
19-3/4"						2-1/4	3
20-3/4"						2-1/4	3
21-3/4"							3-1/8
22-3/4"							3-1/8
23-3/4"							3-1/8
24-3/4"							3-3/8

尺寸 Dimension

型號 Nom. Size	d		d1		H	D	
	尺寸 Size	公差 Tolerance	尺寸 Size	公差 Tolerance			
1/2"	0.499	0 -0.0005	0.501	+0.0005 0	0 -0.008	0.615	
5/8"	0.624		0.626			3/16	0.740
3/4"	0.749		0.751				0.990
7/8"	0.874		0.876		1/4	1.115	
1"	0.999		1.001			1.240	
1-1/4"	1.249		1.251		5/16	1.490	
1-1/2"	1.499		1.501			1.740	
1-3/4"	1.749		1.751			1.990	
2"	1.999		2.001			2.240	
2-1/2"	2.499		2.501			2.740	
3"	2.999	3.001	1/2	3.365			