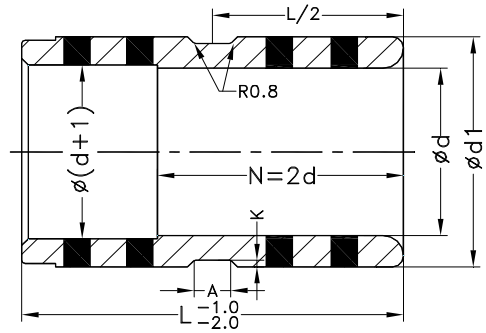


**石墨自潤滑直身導套(公制)**  
**Self-Lubricating Straight Guide Bush**

材 質: 高力黃銅 + 石墨

Material: 650# + Graphite



單位Unit:MM

尺寸 Dimension						
型號 Nom. size	d		d1		A±0.5	K
	尺寸 Size	公差 Tolerance	尺寸 Size	公差 Tolerance		
20	20	+0.021 0	30	+0.021 +0.008	5	0.5
25	25		35	+0.025 +0.009		
30	30		42	+0.018 +0.002		
35	35	+0.025 0	48	+0.021 +0.002	9	
40	40		55			
50	50	+0.030 0	70	+0.025 +0.003	11	
60	60		80			
70	70		90			
80	80		105			

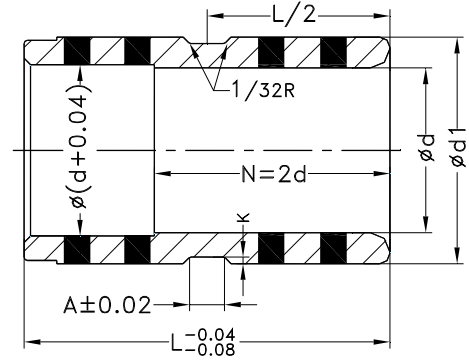
標準尺寸 Standard Sizes										
L \ S \ d	20	25	30	35	40	50	60	70	80	
	20	●	○							
25	●	●	○							
30	●	●	●	○	○					
35	●	●	●	●	○					
40	●	●	●	●	●	○	○	○	○	
50	●	●	●	●	●	●	●	○	○	
60	●	●	●	●	●	●	●	○	○	
70			●	●	●	●	●	○	○	
80			●	●	●	●	●	○	○	
90						○	○	○	○	

○=訂制 Custom Made , ●=庫存 Stock

**石墨自潤滑直身導套(英制)**  
**Self-Lubricating Straight Guide Bush**

材 質: 高力黃銅 + 石墨

Material: 650 # + Graphite



單位Unit:INCH

尺寸 Dimension							
型號 Nom. size	d		d1		A	K	
	尺寸 Size	公差 Tolerance	尺寸 Size	公差 Tolerance			
3/4"	0.7505	+0.0005 0	1.1255	+0.0005 0	0.20	0.02	
7/8"	0.8755		1.2505				
1"	1.0005		1.3755				
1-1/4"	1.2505		1.6255		0.27		
1-1/2"	1.5005		2.0005				
2"	2.0005		2.5005				
2-1/2"	2.5005		3.2505		0.46		0.04
3"	3.0005		3.7505				

標準尺寸 Standard Sizes								
L \ S	d							
	3/4"	7/8"	1"	1-1/4"	1-1/2"	2"	2-1/2"	3"
7/8"	●	●						
1-3/8"	●	●	●	●	●		○	
1-7/8"	●	●	●	●	●	●	○	○
2-3/8"			●	●	●	●	○	○
2-7/8"				○	●	●	○	○
3-3/8"					●	●	○	
3-7/8"						●	○	○
4-3/8"							○	○
4-7/8"							○	○

○=訂制 Custom Made , ●=庫存 Stock